


**Deloitte.**



**MAKE AN  
IMPACT.**

**2016 CALENDAR**

An illustration showing various hands interacting with technology and office tools. At the top left, hands use a tablet with a green interface. To the right, hands use a smartphone with a blue interface. On the right side, hands use a pen to write on a blue document with a grid. At the bottom right, hands use a pen to write on a green document with a grid. At the bottom center, a hand holds a magnifying glass over a tablet. At the bottom left, hands use a laptop with a blue interface. On the left side, there is a blue notepad with a pen and a green folder with a CD/DVD. The background is white with scattered office supplies like a stapler and a paperclip.

Deloitte's Corporate Social Responsibility vision is for  
Deloitte and our people around the world to be  
leaders in society.

At Deloitte, helping clients solve challenging problems is  
what we do every day.

Deloitte professionals bring these same skills to work with  
social organisations and nurture emerging solutions to  
social and environmental challenges, leveraging the  
breadth of our services and innovation capabilities, and the  
Deloitte network's local and global reach, to make an  
impact that matters in society.

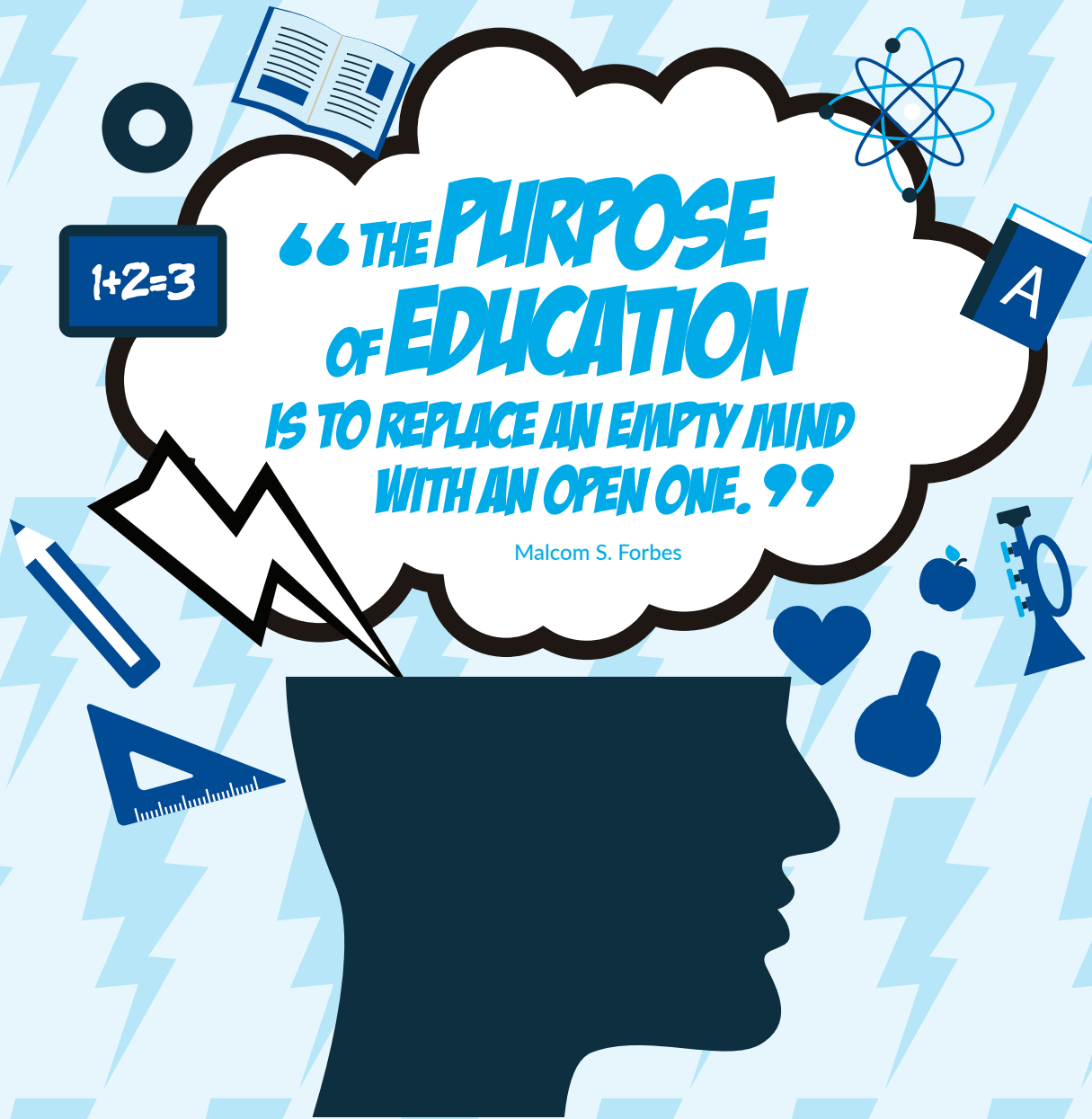
Businesses are shaping the world we live in and what we will leave behind for future generations.

We have the power to significantly impact the most pressing challenges in the world and contribute to building a flourishing society. By integrating corporate social responsibility activities into our business processes and stakeholder management, organisations can achieve the ultimate goal of creating both social and corporate value.

As the saying goes, businesses cannot be successful when the society around them fails.

The world is watching. Are you ready to make an impact that matters?





Worldwide, nearly 60 million children of primary school-age are being denied their right to education. While access to education has improved in the past decade for millions of children, far too many still remain excluded from school and many of those who do attend do not learn the basic skills they need to lead productive lives. Governments and businesses in Southeast Asia must come together to help enhance our education systems, including teaching vocational and life skills to ensure every child gets the right start in life.



December 2015

Sun	Mon	Tue	Wed	Thu	Fri	Sat
		1	2	3	4	5
6	7	8	9	10	11	12
13	14	15	16	17	18	19
20	21	22	23	24	25	26
27	28	29	30	31		

February 2016

Sun	Mon	Tue	Wed	Thu	Fri	Sat
	1	2	3	4	5	6
7	8	9	10	11	12	13
14	15	16	17	18	19	20
21	22	23	24	25	26	27
28	29					

Sun	Mon	Tue	Wed	Thu	Fri	Sat
31					1	2
3	4	5	6	7	8	9
10	11	12	13	14	15	16
17	18	19	20	21	22	23
24	25	26	27	28	29	30

Indoor and outdoor air pollution are responsible for about 7 million premature deaths annually and countless other illnesses and health complications. Clean air is considered to be a basic requirement of human health and well-being and cities are making notable improvements – demonstrating that air quality can be improved by implementing policy measures such as banning the use of coal for “space heating” in buildings, using renewable or “clean” fuels for electricity production, and improving efficiency of motor vehicle engines.

Businesses have a role to play too, acting as good global citizens and ensuring their production and supply chains get greener in the years to come.



**“ I DURST NOT LAUGH FOR  
FEAR OF OPENING MY LIPS AND  
RECEIVING THE BAD AIR. ”**

William Shakespeare



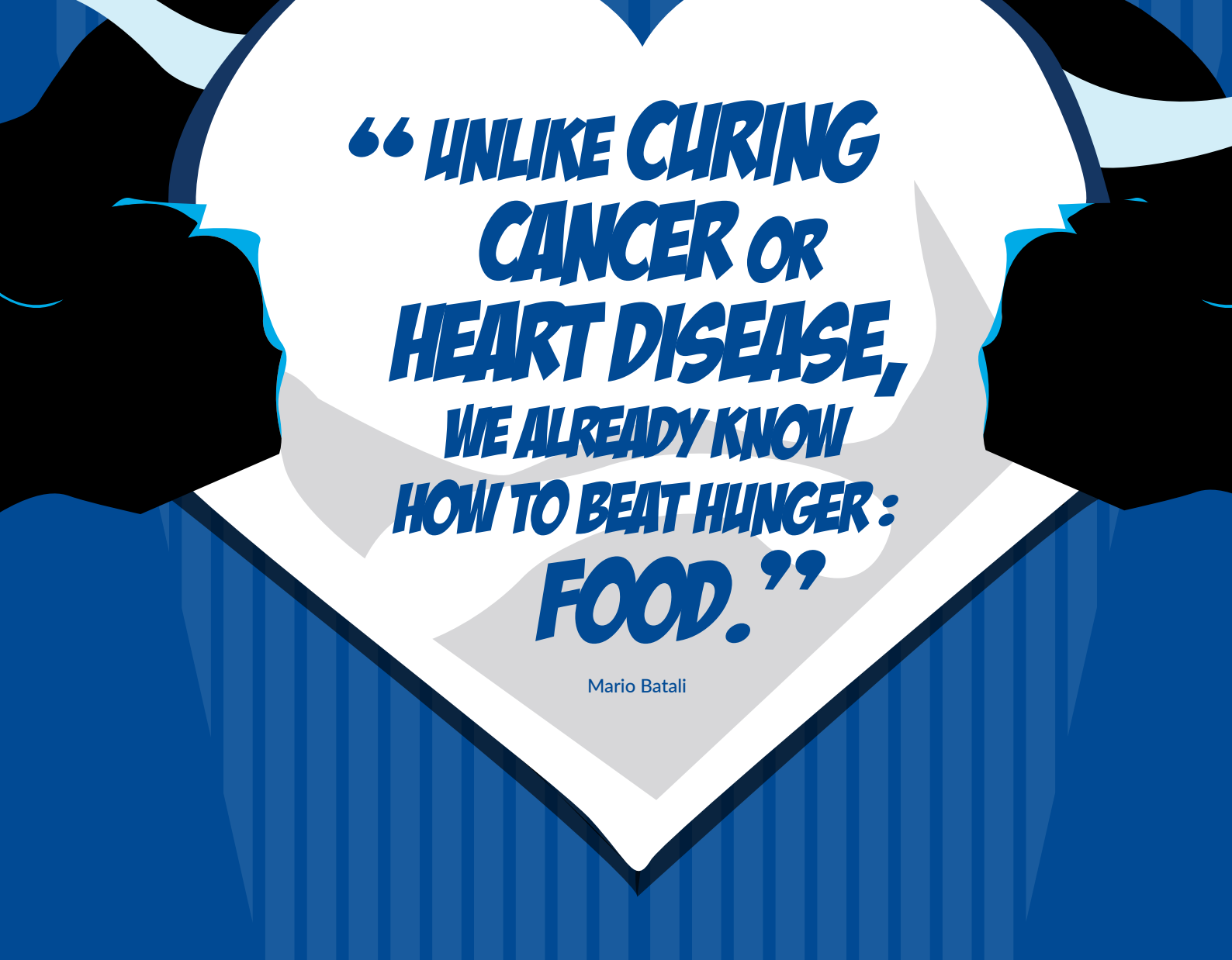
January 2016

Sun	Mon	Tue	Wed	Thu	Fri	Sat
					1	2
3	4	5	6	7	8	9
10	11	12	13	14	15	16
17	18	19	20	21	22	23
24	25	26	27	28	29	30
31						

March 2016

Sun	Mon	Tue	Wed	Thu	Fri	Sat
		1	2	3	4	5
6	7	8	9	10	11	12
13	14	15	16	17	18	19
20	21	22	23	24	25	26
27	28	29	30	31		

Sun	Mon	Tue	Wed	Thu	Fri	Sat
	1	2	3	4	5	6
7	8	9	10	11	12	13
14	15	16	17	18	19	20
21	22	23	24	25	26	27
28	29					



**“UNLIKE CURING  
CANCER OR  
HEART DISEASE,  
WE ALREADY KNOW  
HOW TO BEAT HUNGER:  
FOOD.”**

Mario Batali

There are 795 million undernourished people in the world today and yet food goes to waste every minute of the day. Solving hunger is not just about stopping people from starving – good nutrition lays the foundation for progress in many other areas of development, including health and education as well-nourished women have healthier, heavier babies with stronger immune systems and a healthy, well-fed child is more likely to attend school. All of us have a role to play in ensuring that essential food supplies reach those in need, whether locally or globally, young or old.






February 2016

Sun	Mon	Tue	Wed	Thu	Fri	Sat
	1	2	3	4	5	6
7	8	9	10	11	12	13
14	15	16	17	18	19	20
21	22	23	24	25	26	27
28	29					

April 2016

Sun	Mon	Tue	Wed	Thu	Fri	Sat
					1	2
3	4	5	6	7	8	9
10	11	12	13	14	15	16
17	18	19	20	21	22	23
24	25	26	27	28	29	30

Sun	Mon	Tue	Wed	Thu	Fri	Sat
		1	2	3	4	5
6	7	8	9	10	11	12
13	14	15	16	17	18	19
20	21	22	23	24	25	26
27	28	29	30	31		

The background is a vibrant green with a pattern of lighter green circles. On the left, a dark green silhouette of a tree trunk and branches extends vertically. In the upper left, a black silhouette of a bird with wings spread is flying. In the center, a light green silhouette of a deer with large antlers stands facing left. To its left, a light green silhouette of a rhinoceros is shown in profile, facing right. To the right of the deer, a black silhouette of another bird is flying. Further right, a light green silhouette of an elephant with large tusks is shown in profile, facing left.

**“THE WILDLIFE  
AND ITS HABITAT  
CANNOT SPEAK,  
SO WE MUST AND  
WE WILL.”**

President Theodore Roosevelt

By 2025 as many as one-fifth of all animal species may be lost: gone forever. One of the most important ways to help threatened plants and animals survive is to protect their habitats permanently in national parks, nature reserves or wilderness areas. Corporate volunteers have a role to play by planting trees, bushes and plants that benefit wildlife and helping clean up our environment. Before that though, having a recycling policy and helping reduce the organisation's energy footprint through 'Reduce' and 'Reuse' schemes can cut the demand for products that threatens our natural assets.




March 2016

Sun	Mon	Tue	Wed	Thu	Fri	Sat
		1	2	3	4	5
6	7	8	9	10	11	12
13	14	15	16	17	18	19
20	21	22	23	24	25	26
27	28	29	30	31		

May 2016

Sun	Mon	Tue	Wed	Thu	Fri	Sat
1	2	3	4	5	6	7
8	9	10	11	12	13	14
15	16	17	18	19	20	21
22	23	24	25	26	27	28
29	30	31				

Sun	Mon	Tue	Wed	Thu	Fri	Sat
					1	2
3	4	5	6	7	8	9
10	11	12	13	14	15	16
17	18	19	20	21	22	23
24	25	26	27	28	29	30



**“A CHILD IS ONLY  
AS DISABLED AS  
THEIR ENVIRONMENT  
AND THE BELIEFS OF THE  
PEOPLE AROUND THEM.”**

Bala Pillai

One billion people worldwide live with disabilities, many of them on the fringe of our societies. The 8th ASEAN Para Games, held in Singapore in December 2015, showed what people with disabilities can do and how an inclusive society can help them reach their full potential. While sports has a role to play, education and support networks are more important. Ensuring that disabled people have access to basic infrastructure as well as educational and vocational opportunities – including enriching jobs that provide them the chance to be self-sufficient – is something corporates and governments must deliver together.



April 2016

Sun	Mon	Tue	Wed	Thu	Fri	Sat
					1	2
3	4	5	6	7	8	9
10	11	12	13	14	15	16
17	18	19	20	21	22	23
24	25	26	27	28	29	30

June 2016

Sun	Mon	Tue	Wed	Thu	Fri	Sat
			1	2	3	4
5	6	7	8	9	10	11
12	13	14	15	16	17	18
19	20	21	22	23	24	25
26	27	28	29	30		

Sun	Mon	Tue	Wed	Thu	Fri	Sat
1	2	3	4	5	6	7
8	9	10	11	12	13	14
15	16	17	18	19	20	21
22	23	24	25	26	27	28
29	30	31				

**“A WOMAN IS HUMAN. SHE IS NOT BETTER, WISER, STRONGER, MORE INTELLIGENT, MORE CREATIVE, OR MORE RESPONSIBLE THAN A MAN. LIKewise, SHE IS NEVER LESS. EQUALITY IS A GIVEN. A WOMAN IS HUMAN.”**

Vera Nazarian

Recent legislative efforts and other initiatives have helped bring women's representation in the boardroom to an all-time high. Despite this, nearly 90% of the world's board seats still belong to men and only a small percentage of global companies had female CEOs. Gender diversity must be a business issue – in a recent Deloitte survey, only 48% of respondents believed gender diversity is a C-suite priority for their company. Respondents ranked flexible working, executive commitment, targets, and an agreed and articulated business case for gender diversity as top priorities for advancement of women – food for thought for corporates in Southeast Asia.





May 2016

Sun	Mon	Tue	Wed	Thu	Fri	Sat
1	2	3	4	5	6	7
8	9	10	11	12	13	14
15	16	17	18	19	20	21
22	23	24	25	26	27	28
29	30	31				

July 2016

Sun	Mon	Tue	Wed	Thu	Fri	Sat
31					1	2
3	4	5	6	7	8	9
10	11	12	13	14	15	16
17	18	19	20	21	22	23
24	25	26	27	28	29	30

Sun	Mon	Tue	Wed	Thu	Fri	Sat
			1	2	3	4
5	6	7	8	9	10	11
12	13	14	15	16	17	18
19	20	21	22	23	24	25
26	27	28	29	30		

**“MEDICAL SCIENCE HAS PROVEN  
TIME AND AGAIN THAT WHEN THE  
RESOURCES ARE PROVIDED,  
GREAT PROGRESS IN THE TREATMENT,  
CURE, AND PREVENTION OF  
DISEASE CAN OCCUR.”**

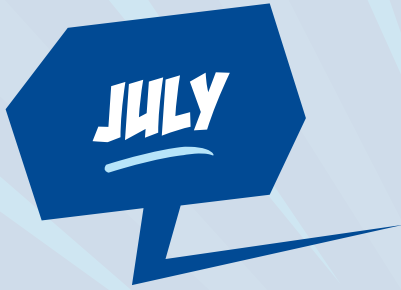
Michael J. Fox

400 million people globally lack access to one or more essential health services. Every year 100 million are pushed into poverty and 150 million people suffer financial catastrophe because 32% of health expenditure worldwide comes from out-of-pocket payments.

People-centred and integrated health services are critical for reaching universal health coverage. In the next twenty years, 40-50 million new health care workers will need to be trained and deployed to meet the need. Governments and businesses alike have a role to play in increasing access to and coverage of health services – after all, paying for health should not cost you your livelihood.







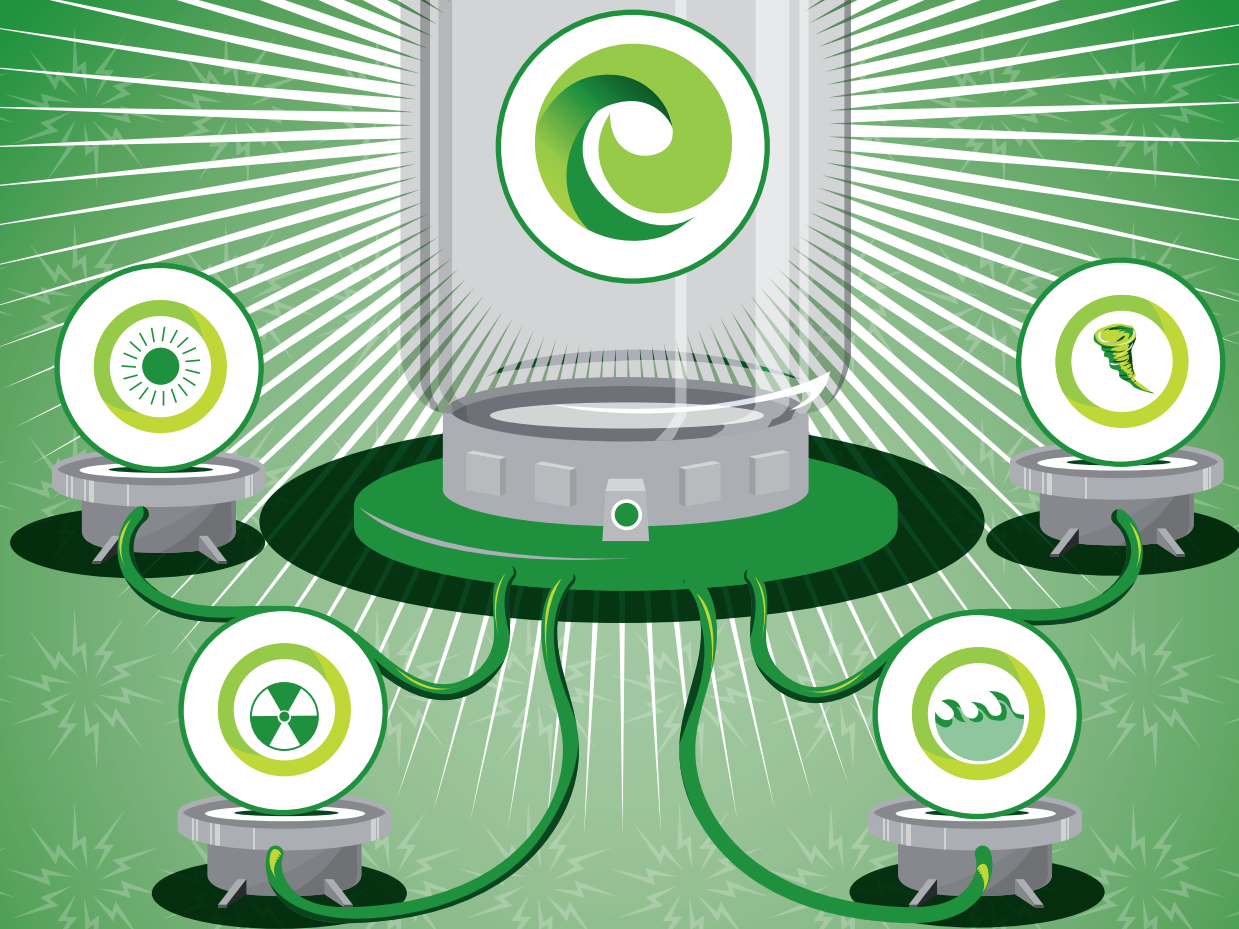
June 2016

Sun	Mon	Tue	Wed	Thu	Fri	Sat
			1	2	3	4
5	6	7	8	9	10	11
12	13	14	15	16	17	18
19	20	21	22	23	24	25
26	27	28	29	30		

August 2016

Sun	Mon	Tue	Wed	Thu	Fri	Sat
	1	2	3	4	5	6
7	8	9	10	11	12	13
14	15	16	17	18	19	20
21	22	23	24	25	26	27
28	29	30	31			

Sun	Mon	Tue	Wed	Thu	Fri	Sat
31					1	2
3	4	5	6	7	8	9
10	11	12	13	14	15	16
17	18	19	20	21	22	23
24	25	26	27	28	29	30



**“THE USE OF ALTERNATIVE ENERGY IS INEVITABLE AS FOSSIL FUELS ARE FINITE.”**

Gawdat Bahgat

Governments spend just a few billion dollars a year on R&D into green energy technology, about 0.05% of GDP worldwide. Yet every dollar spent now on clean energy could generate 3 dollars in fuel savings by 2050. Renewable energy only accounts for 13.5% of the energy supply today. Energy companies – including the oil majors – are already planning for an alternative energy future as they seek to diversify their production; now, manufacturers need to consider how the future of energy could impact their input costs and supply chain in the years to come and start planning for their alternative, sustainable future too.

# AUGUST

## July 2016

Sun	Mon	Tue	Wed	Thu	Fri	Sat
31					1	2
3	4	5	6	7	8	9
10	11	12	13	14	15	16
17	18	19	20	21	22	23
24	25	26	27	28	29	30

## September 2016

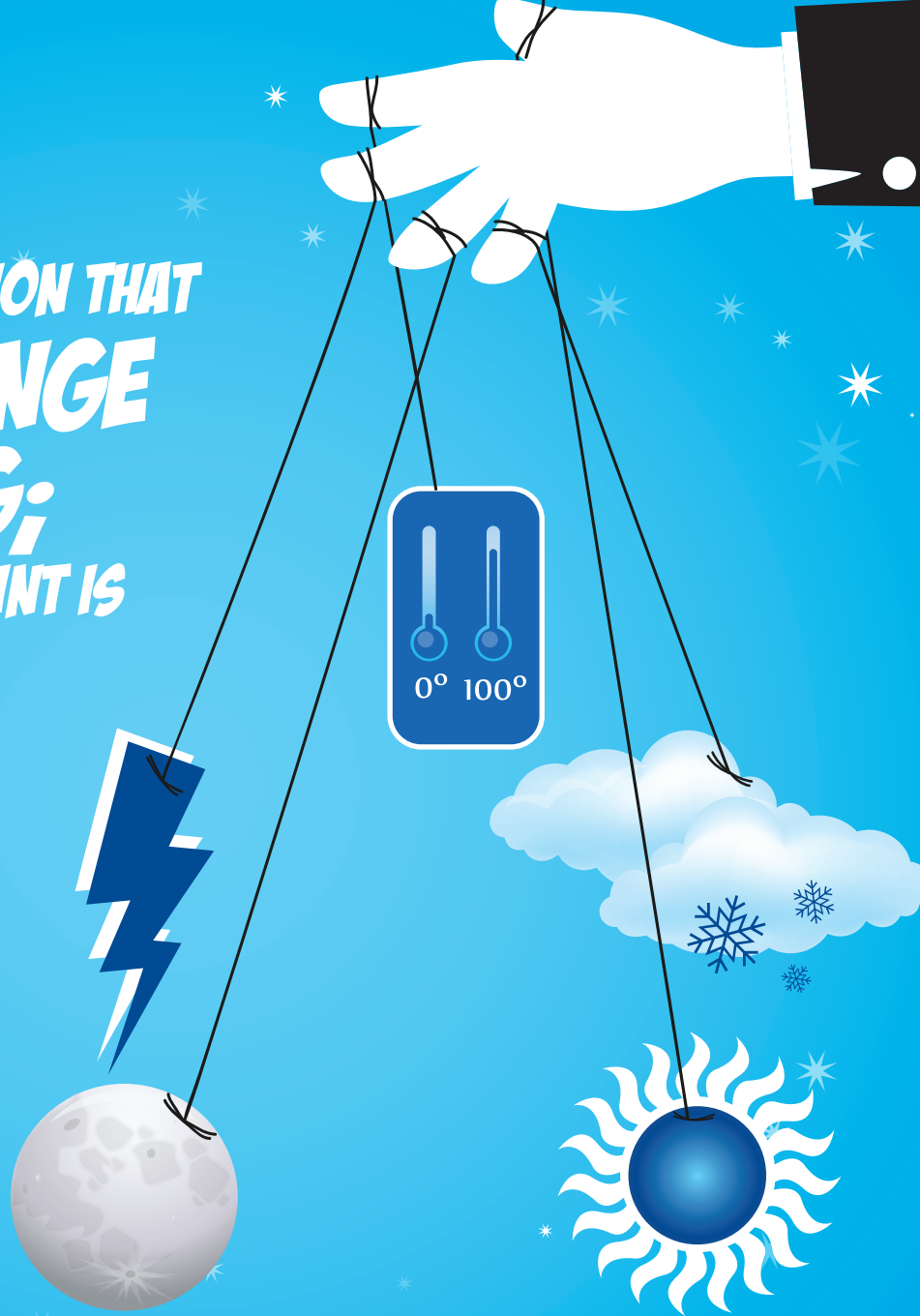
Sun	Mon	Tue	Wed	Thu	Fri	Sat
				1	2	3
4	5	6	7	8	9	10
11	12	13	14	15	16	17
18	19	20	21	22	23	24
25	26	27	28	29	30	

Sun	Mon	Tue	Wed	Thu	Fri	Sat
	1	2	3	4	5	6
7	8	9	10	11	12	13
14	15	16	17	18	19	20
21	22	23	24	25	26	27
28	29	30	31			

**“THERE IS NO QUESTION THAT CLIMATE CHANGE IS HAPPENING; THE ONLY ARGUABLE POINT IS WHAT PART HUMANS ARE PLAYING IN IT.”**

David Attenborough

In the first eight months of 2015, the world saw more than 120 climate-related disasters. Fourteen of the 15 hottest years since record-keeping began over 130 years ago have been since the turn of the century (2000-2015). Economic development pushes on – much of it in industries that affect the environment – but immediate global action is needed to slow the growth in greenhouse gas emissions this decade and to help countries prepare for a warmer world and adapt to changes that are already locked in. Getting there will require economic transformations and a path to net zero emissions before the end of the century.






### August 2016

Sun	Mon	Tue	Wed	Thu	Fri	Sat
	1	2	3	4	5	6
7	8	9	10	11	12	13
14	15	16	17	18	19	20
21	22	23	24	25	26	27
28	29	30	31			

### October 2016

Sun	Mon	Tue	Wed	Thu	Fri	Sat
30	31					1
2	3	4	5	6	7	8
9	10	11	12	13	14	15
16	17	18	19	20	21	22
23	24	25	26	27	28	29

Sun	Mon	Tue	Wed	Thu	Fri	Sat
				1	2	3
4	5	6	7	8	9	10
11	12	13	14	15	16	17
18	19	20	21	22	23	24
25	26	27	28	29	30	



**“ IT IS CLEAR THAT  
GOOD CORPORATE  
GOVERNANCE  
MAKES GOOD SENSE.  
THE NAME OF THE GAME FOR A  
COMPANY IN THE 21ST CENTURY  
WILL BE CONFORM WHILE  
IT PERFORMS. ”**

Mervyn King

Good corporate governance is not an end in itself: it is a means to support economic efficiency, sustainable growth and financial stability. It facilitates companies' access to capital for long-term investment and helps ensure that shareholders and other stakeholders who contribute to the success of the corporation are treated fairly. During the last decade, corporate governance rules and practices have improved in many countries and companies, but much remains to be done. Today, corporations, policy makers and regulators are faced with the important challenge of keeping corporate governance up-to-speed with the rapid changes in both the corporate and financial landscape.





September 2016

Sun	Mon	Tue	Wed	Thu	Fri	Sat
				1	2	3
4	5	6	7	8	9	10
11	12	13	14	15	16	17
18	19	20	21	22	23	24
25	26	27	28	29	30	

November 2016

Sun	Mon	Tue	Wed	Thu	Fri	Sat
		1	2	3	4	5
6	7	8	9	10	11	12
13	14	15	16	17	18	19
20	21	22	23	24	25	26
27	28	29	30			

Sun	Mon	Tue	Wed	Thu	Fri	Sat
30	31					1
2	3	4	5	6	7	8
9	10	11	12	13	14	15
16	17	18	19	20	21	22
23	24	25	26	27	28	29

**“CLEAN WATER,  
THE ESSENCE OF LIFE  
AND A BIRTHRIGHT FOR  
EVERYONE, MUST BECOME  
AVAILABLE TO ALL PEOPLE NOW.”**

Jean-Michel Cousteau

2.5 billion people worldwide lack access to improved sanitation, while 48 million people lack access to drinking-water and another 1.8 billion people use a source of drinking-water that is contaminated in some form – often from industrial waste. Yet the technology exists to ensure clean water for everyone – it’s just a matter of getting the water to where it is needed, which can be expensive. Governments and corporates have a role to play in partnering to ensure that our waterways stay clean and that all people can enjoy access to clean water, which will in turn improve quality of life and drive economic development.








October 2016

Sun	Mon	Tue	Wed	Thu	Fri	Sat
30	31					1
2	3	4	5	6	7	8
9	10	11	12	13	14	15
16	17	18	19	20	21	22
23	24	25	26	27	28	29

December 2016

Sun	Mon	Tue	Wed	Thu	Fri	Sat
				1	2	3
4	5	6	7	8	9	10
11	12	13	14	15	16	17
18	19	20	21	22	23	24
25	26	27	28	29	30	31

Sun	Mon	Tue	Wed	Thu	Fri	Sat
		1	2	3	4	5
6	7	8	9	10	11	12
13	14	15	16	17	18	19
20	21	22	23	24	25	26
27	28	29	30			



**“SOCIAL  
ENTREPRENEURS  
ARE NOT CONTENT JUST  
TO GIVE A FISH OR  
TEACH HOW TO FISH.  
THEY WILL NOT REST UNTIL THEY  
HAVE REVOLUTIONIZED THE  
FISHING INDUSTRY.”**

Bill Drayton

While social enterprises make revenues just like other businesses, they have one big difference: they put their mission at the centre of what they do. They can be for-profit or not-for-profit, but the distinguishing feature is that their primary aim is to achieve improve society in some way while also earning revenues, which are often reinvested into driving further change, effectively putting an entrepreneurial spin on community change. This growing business segment will have an important role to play in economic and social development in the years to come; their success thus far has already made traditional corporates stop and think about their own purpose and how they too can make an impact that matters.

# DECEMBER

## November 2016

Sun	Mon	Tue	Wed	Thu	Fri	Sat
		1	2	3	4	5
6	7	8	9	10	11	12
13	14	15	16	17	18	19
20	21	22	23	24	25	26
27	28	29	30			

## January 2017

Sun	Mon	Tue	Wed	Thu	Fri	Sat
1	2	3	4	5	6	7
8	9	10	11	12	13	14
15	16	17	18	19	20	21
22	23	24	25	26	27	28
29	30	31				

Sun	Mon	Tue	Wed	Thu	Fri	Sat
				1	2	3
4	5	6	7	8	9	10
11	12	13	14	15	16	17
18	19	20	21	22	23	24
25	26	27	28	29	30	31



At Deloitte, we believe that we must use the power of our collective network and experience to do what matters most for the society that we work and live in.

We are led by a purpose: to make an impact that matters. This purpose defines who we are and binds us together for all of us to put our passion, determination, and skills to use for the benefit of our society.

# 2017 Calendar

## January

S	M	T	W	T	F	S
1	2	3	4	5	6	7
8	9	10	11	12	13	14
15	16	17	18	19	20	21
22	23	24	25	26	27	29
29	30	31				

## February

S	M	T	W	T	F	S
			1	2	3	4
5	6	7	8	9	10	11
12	13	14	15	16	17	18
19	20	21	22	23	24	25
26	27	28				

## March

S	M	T	W	T	F	S
			1	2	3	4
5	6	7	8	9	10	11
12	13	14	15	16	17	18
19	20	21	22	23	24	25
26	27	28	29	30	31	

## April

S	M	T	W	T	F	S
30						1
2	3	4	5	6	7	8
9	10	11	12	13	14	15
16	17	18	19	20	21	22
23	24	25	26	27	29	29

## May

S	M	T	W	T	F	S
	1	2	3	4	5	6
7	8	9	10	11	12	13
14	15	16	17	18	19	20
21	22	23	24	25	26	27
28	29	30	31			

## June

S	M	T	W	T	F	S
				1	2	3
4	5	6	7	8	9	10
11	12	13	14	15	16	17
18	19	20	21	22	23	24
25	26	27	28	29	30	

## July

S	M	T	W	T	F	S
30	31					1
2	3	4	5	6	7	8
9	10	11	12	13	14	15
16	17	18	19	20	21	22
23	24	25	26	27	28	29

## August

S	M	T	W	T	F	S
		1	2	3	4	5
6	7	8	9	10	11	12
13	14	15	16	17	18	19
20	21	22	23	24	25	26
27	28	29	30	31		

## September

S	M	T	W	T	F	S
					1	2
3	4	5	6	7	8	9
10	11	12	13	14	15	16
17	18	19	20	21	22	23
24	25	26	27	28	29	30

## October

S	M	T	W	T	F	S
1	2	3	4	5	6	7
8	9	10	11	12	13	14
15	16	17	18	19	20	21
22	23	24	25	26	27	29
29	30	31				

## November

S	M	T	W	T	F	S
			1	2	3	4
5	6	7	8	9	10	11
12	13	14	15	16	17	18
19	20	21	22	23	24	25
26	27	28	29	30		

## December

S	M	T	W	T	F	S
31					1	2
3	4	5	6	7	8	9
10	11	12	13	14	15	16
17	18	19	20	21	22	23
24	25	26	27	28	29	30



# 2016 holidays for Southeast Asia

## January

1 Jan	New Year's Day (all countries)
2 Jan	Special non-working day (PH)
4 Jan	Myanmar's Independence Day (MM)
7 Jan	Victory over Genocide Day (KH)
9 Jan	Kayin New Year's Day (MM)
18 Jan	Martin Luther King Jr. Day (GU)
23 Jan	Thaipusam (MY)

## February

7 Feb	Lunar New Year – Eve (VN)
8 Feb	Lunar New Year – 1st Day (BN, MY, PH, SG, VN)
9 Feb	Lunar New Year – 2nd day (MY, SG, VN)
10-12 Feb	Lunar New Year – 3rd-5th day (VN)
12 Feb	Union Day (MM)
15 Feb	Presidents' Day (GU)
22 Feb	Meak Bochea Day (KH)
22 Feb	Magha Puja (TH)
23 Feb	National Day (BN)
25 Feb	People Power Revolution (PH)

## March

2 Mar	Peasant's Day (MM)
7 Mar	History & Chamorro Heritage Day (GU)
8 Mar	Women's Day (KH, LA)
9 Mar	Hari Raya Nyepi (ID)
22 Mar	Full Moon Day of Tabaung (MM)
24 Mar	Maundy Thursday (PH)
25 Mar	Good Friday (ID, PH, SG)
26 Mar	Black Saturday (PH)
27 Mar	Armed Forces Day (MM)

## April

6 Apr	Chakri Memorial Day (TH)
9 Apr	Day of Valor (PH)
11-20 Apr	Maha Thingyan (MM)
14-16 Apr	Lao New Year (LA)
13-15 Apr	Khmer New Year (KH)
13-15 Apr	Songkran Festival (TH)
16 Apr	King's Commemoration (VN)
30 Apr	Liberation Day (VN)

## May

1 May	Labour Day (KH, ID, LA, MY, MM, PH, SG, TH, VN)
5 May	Israk Mikraj (BN)
5 May	Coronation Day (TH)
5 May	Ascension Day (ID)
6 May	Israk Mikraj (ID)
13-15 May	King's Birthday (KH)
20 May	Full Moon Day of Kasong (KH, MM)
20 May	Wisakha Bucha Day (TH)
21 May	Vesak Day (MY, SG)
22 May	Vesak Day (ID)
24 May	Royal Plowing Day (KH)
30 May	Memorial Day (GU)
31 May	Royal Brunei Armed Forces Day (BN)

## June

1 June	Children's Day (KH, LA)
4 June	Agong's Birthday (MY)
6 June	Start of Ramadhan (BN)
12 June	Independence Day (PH)
18 June	Queen Mother's birthday (KH)
22 June	Nuzul Al-Quran (BN, MY)

## July

4 July	Independence Day (GU)
6 July	Hari Raya Puasa/Idul Fitri (BN, ID, MY, PH, SG)
7 July	Hari Raya Puasa/Idul Fitri–2nd day (BN, ID, MY)
8 July	Hari Raya Puasa/Idul Fitri–3rd day (BN)
15 July	His Majesty's Birthday (BN)
18 July	Additional public holiday (TH)
19 July	Martyr's Day & Fullmoon day of Waso (MM)
19 July	Asarnha Bucha Day (TH)
20 July	Women's Day (LA)
21 July	Liberation Day (GU)

## August

9 Aug	National Day (SG)
12 Aug	Queen's Birthday (TH)
17 Aug	Independence Day (ID)
21 Aug	Ninoy Aquino Day (PH)
29 Aug	National Heroes Day (PH)
31 Aug	Independence Day (MY)

## September

2 Sep	Independence Day (VN)
5 Sep	Labour Day (GU)
11 Sep	Hari Raya Haji (BN, MY, PH)
12 Sep	Hari Raya Haji (BN, ID, MM, SG)
24 Sep	Constitutional Day (KH)
30 Sep	Ancestor's Day (PH)
30 Sep-3 Oct	Ancestor's Day (KH)

## October

2 Oct	Maal Hijrah (BN, ID, MY)
10 Oct	Columbus Day (GU)
15 Oct	King's Father Commemoration (KH)
15 Oct	Full Moon Day of Thadingyut (MM)
23 Oct	Paris Peace Agreement Day (KH)
23 Oct	Chulalongkorn Day (TH)
29 Oct	Deepavali (MY, MM, SG)
29 Oct	King's Coronation Day (KH)
31 Oct	Special non-working day (PH)

## November

1 Nov	All Saints Day (PH)
2 Nov	All Soul's Day (GU)
9 Nov	Independence Day (KH)
11 Nov	Veteran's Day (GU)
13 Nov	Full Moon of Tazaungmone (MM)
13-15 Nov	Water Festival Ceremony (KH)
23 Nov	National Day (MM)
24 Nov	Thanksgiving Day (GU)
30 Nov	Bonifacio Day (PH)

## December

2 Dec	National Day (LA)
5 Dec	King's Birthday (TH)
8 Dec	Lady of Camarin Day (GU)
10 Dec	Constitution Day (TH)
10 Dec	Int. Human Right's Day (KH)
12 Dec	Prophet Muhammad's birthday (BN, ID, MY)
24 Dec	Special non-working day (PH)
25 Dec	Christmas Day (BN, GU, ID, MY, MM, PH, SG)
28 Dec	Kai Yin New Year (MM)
30 Dec	Rizal Day (PH)
31 Dec	Special non-working day (PH, TH)

BN - Brunei GU - Guam ID - Indonesia KH - Cambodia LA - Lao PDR PH - Philippines MM - Myanmar MY - Malaysia  
SG - Singapore TH - Thailand VN - Vietnam

\* Holidays are subject to change. Note: When a holiday falls on Sunday, the next day is a public holiday.

Deloitte event

Deloitte event

Deloitte event

Deloitte event

Deloitte event

Deloitte event

Deloitte event

Annual leave

Annual leave

Annual leave

Annual leave

Annual leave

Annual leave

Annual leave

Annual leave

Annual leave

Annual leave

Annual leave

Annual leave

Annual leave

Annual leave

